



National Institute of Environmental Health Sciences
Your Environment. Your Health.

21st Century Solutions for the Environmental Workforce

Presented by:
Gregg Keesling
Executive Director of RecycleForce



RecycleForce: WHO WE ARE

- RecycleForce is a nonprofit **Employment Social Enterprise (ESE)** committed to reducing crime through employment and job training, while improving the environment through electronics recycling.
- Returning citizens participate in a **transitional jobs** program where they immediately begin **earning a wage** (and pay taxes) upon reentry from jail or prison.
- **ABC Model: Any job – Better job – Career™**
- Participants receive **support services** including on-the-job training, industry recognized credentials, healthcare and counseling, mentoring, high school equivalency instruction, work readiness, legal services, financial literacy, all **on the clock** and in an environment that allows them to meet the requirements and limitations of their criminal justice oversight.
- The RecycleForce program is a critical **crime reduction** and **violence prevention** strategy, making Indianapolis communities safer.



RecycleForce: WHAT WE DO

“We recycle e-waste while we recycle lives”



- RecycleForce operates an **e-waste recycling business** providing service to businesses, government agencies, municipalities, hospitals, universities, reverse logistics providers, and the public.
- Since 2006, RecycleForce has safely recycled more than 100 million pounds of electronic waste.
- Permitted by IDEM and R2 &RIOS Certified
- Provide HAZWOPER40, RCRA and OSHA trained staff for Indy Tox Drop collection events weekly through Keys2Work.



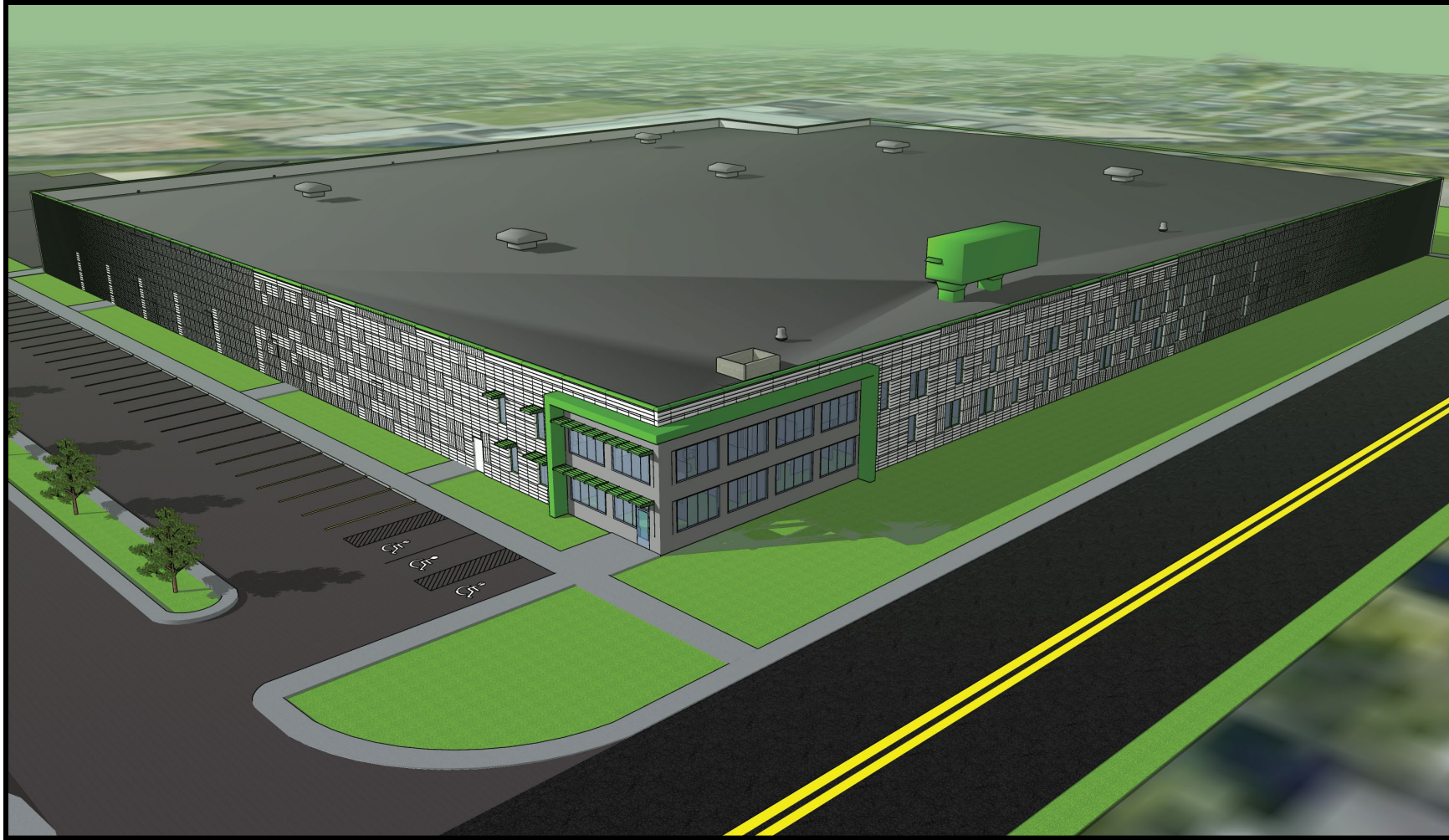
WHERE IT ALL STARTED





A cleaner
environment.
A stronger
workforce.

WHERE WE ARE GOING



RecycleForce: TRAINING

Workforce Training – Creating Jobs, Changing Lives!

All RecycleForce transitional employees are trained and receive portable and stackable credentials

Our trainings and program are a stepping stone on the pathway to long-term employment in the environmental field.

Advanced Trainings Include:

- OSHA 10 and OSHA 30
- HAZWOPER 40
- EPA 608
- RCRA





RecycleForce is a 501(c) 3 employment social enterprise (ESE) delivering comprehensive recycling services to businesses in order to provide **life-changing, transitional employment opportunities** to formerly incarcerated individuals.

We use the revenue we generate recycling to **help men and women rebuild their lives** with job training, gainful employment and comprehensive social services.



**Thank you for the
Opportunity to present
today to the 2023 NIEHS
Conference**

**At this time we'd like to
open up for a discussion
and any Questions you
may have**

